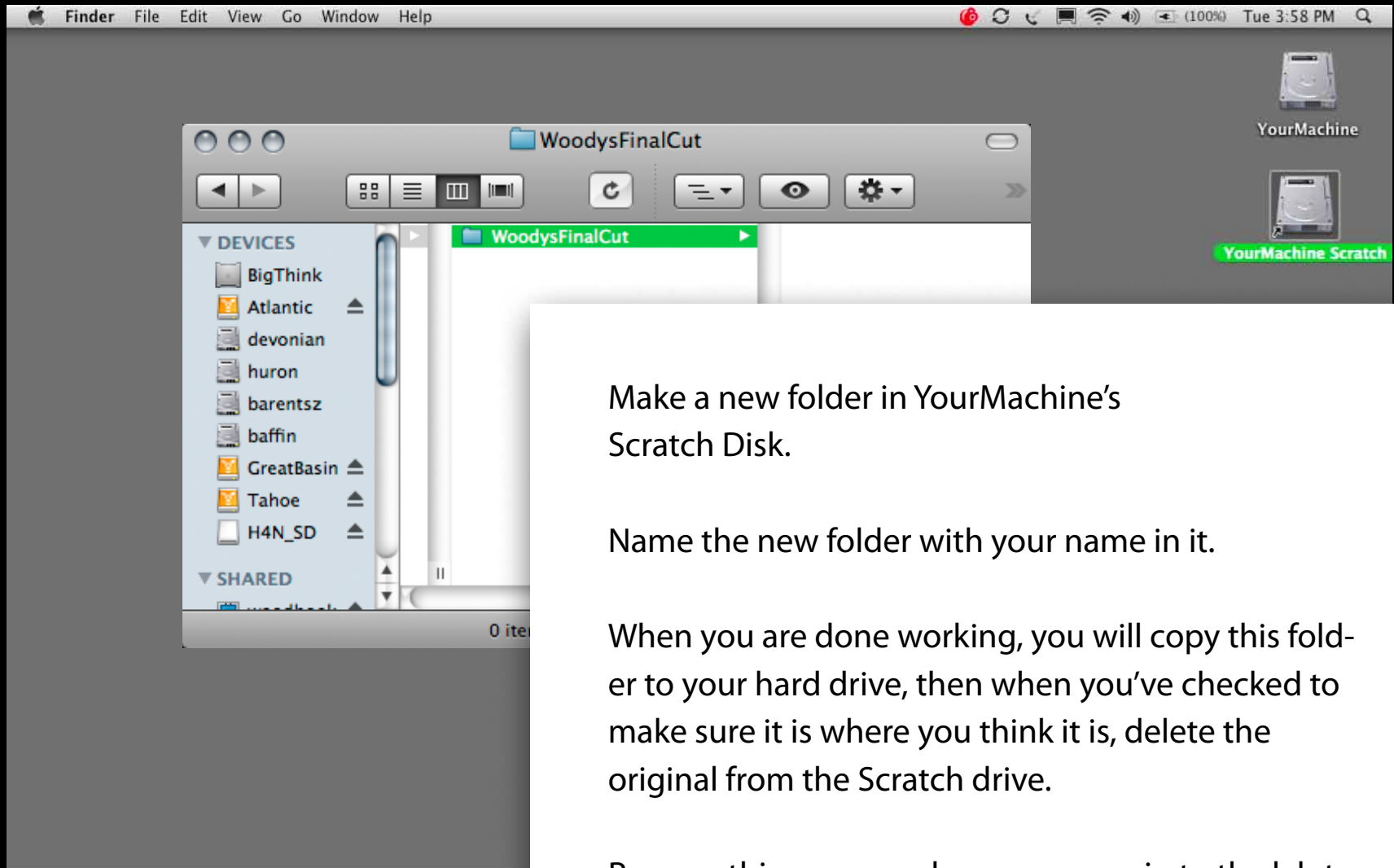


Working Folder Setup



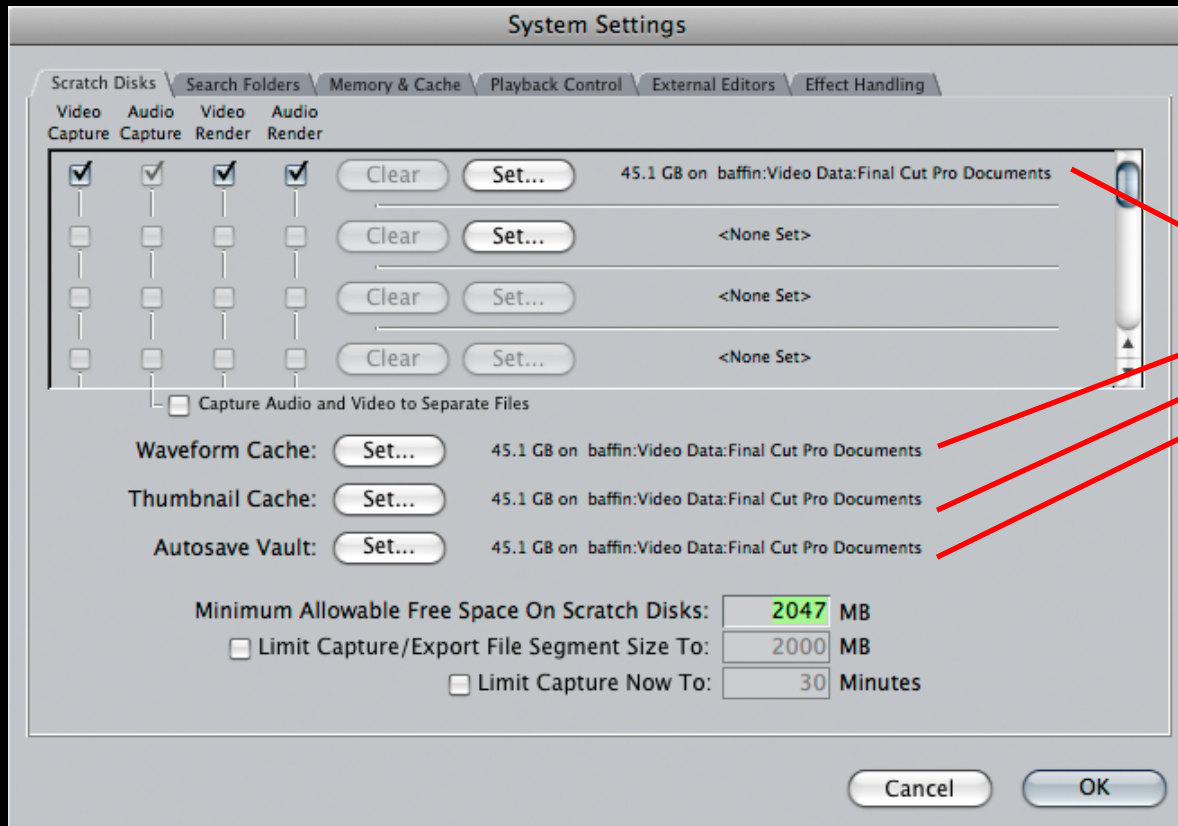
Make a new folder in YourMachine's Scratch Disk.

Name the new folder with your name in it.

When you are done working, you will copy this folder to your hard drive, then when you've checked to make sure it is where you think it is, delete the original from the Scratch drive.

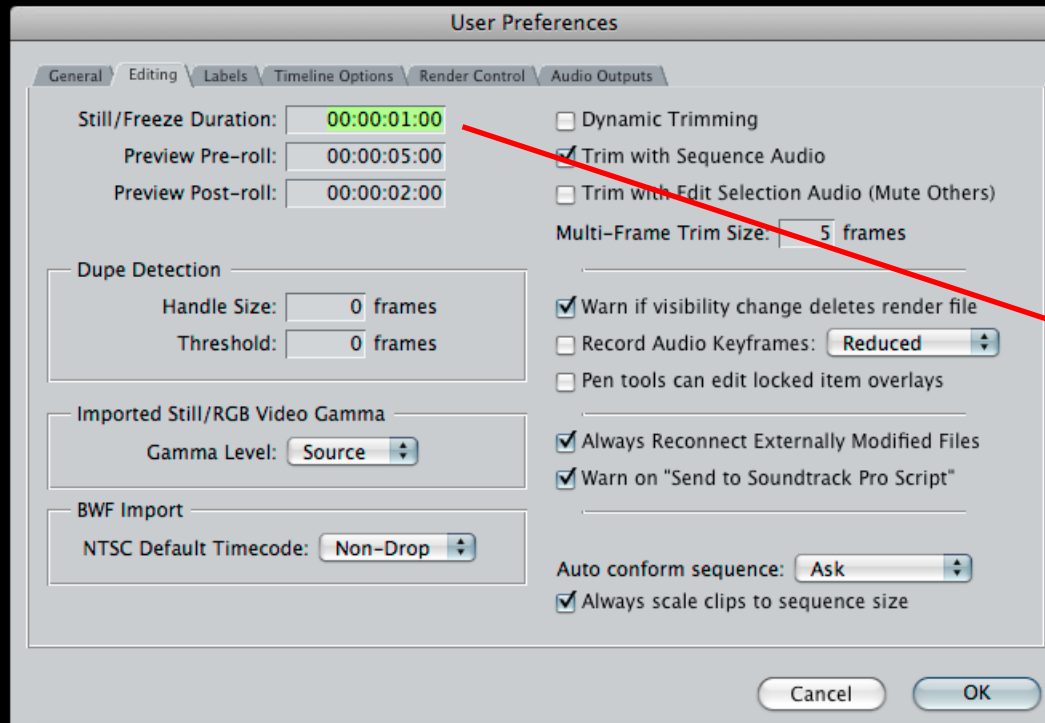
Reverse this process when you come in to the lab to work on your project

Final Cut Pro > System Settings



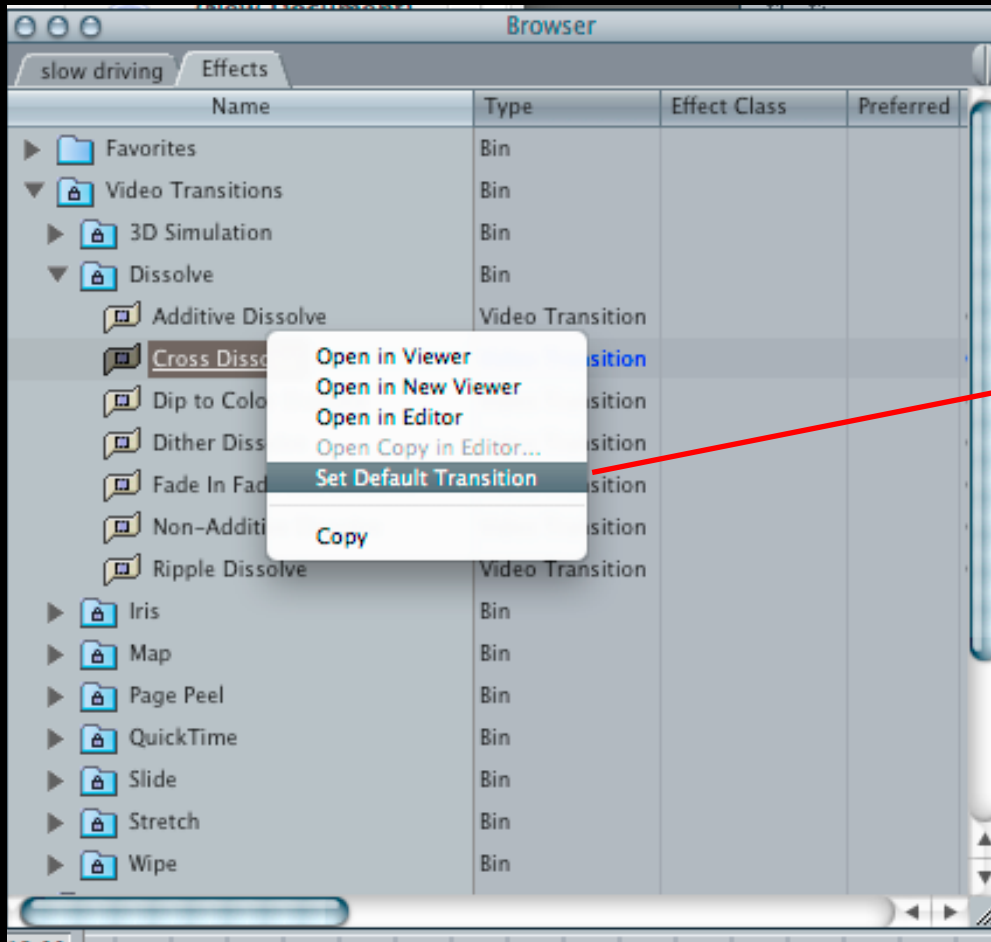
Set these to
YourMachineScratch:YourFolder,
which you built in
the previous step

Final Cut Pro > User Preferences



Set this to the default length of your still frames.

Final Cut Pro > Default Transitions



Control-Click or Right Click to make transition the default